

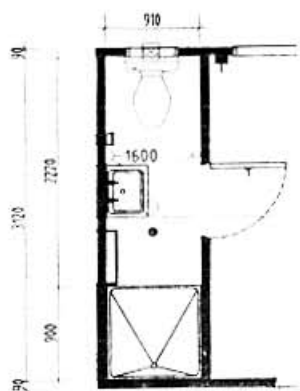


DESIGN WIND SPEED TO AS 1170 2-2002
ANNUAL PROBABILITY OF EXCEEDENCE 1500
WIND REGION D (TYPICAL)
TERRAIN CATEGORY 2
TOPOGRAPHY MULTIPLIER - 10

EQUIPMENT LIST

- D1 2040 x 870 EXTERNAL METAL CLAD SOLID CORE DOOR
- D2 2040 x 720 INTERNAL HOLLOW CORE HINGED DOOR
- W1 1050h x 900w HORIZ. SLIDING WINDOW C/W FLYSCREEN & 100% BLOCK OUT CURTAIN
- W2 350 x 500 FIXED VENTED WINDOW WITH OBSCURE GLASS
- A/C 1HP REVERSE CYCLE SPLIT SYSTEM AIR CONDITIONER
- 1 KING SIZE SINGLE BED AND MATTRESS ENSEMBLE
- 2 LAMINATED CORNER SHELF 650 x 700 WITH ROUNDED CORNER
- 3 PADDED CHAIR WITH ARMS (STEEL)
- 4 LAMINATED WRITING DESK 4500 x 950

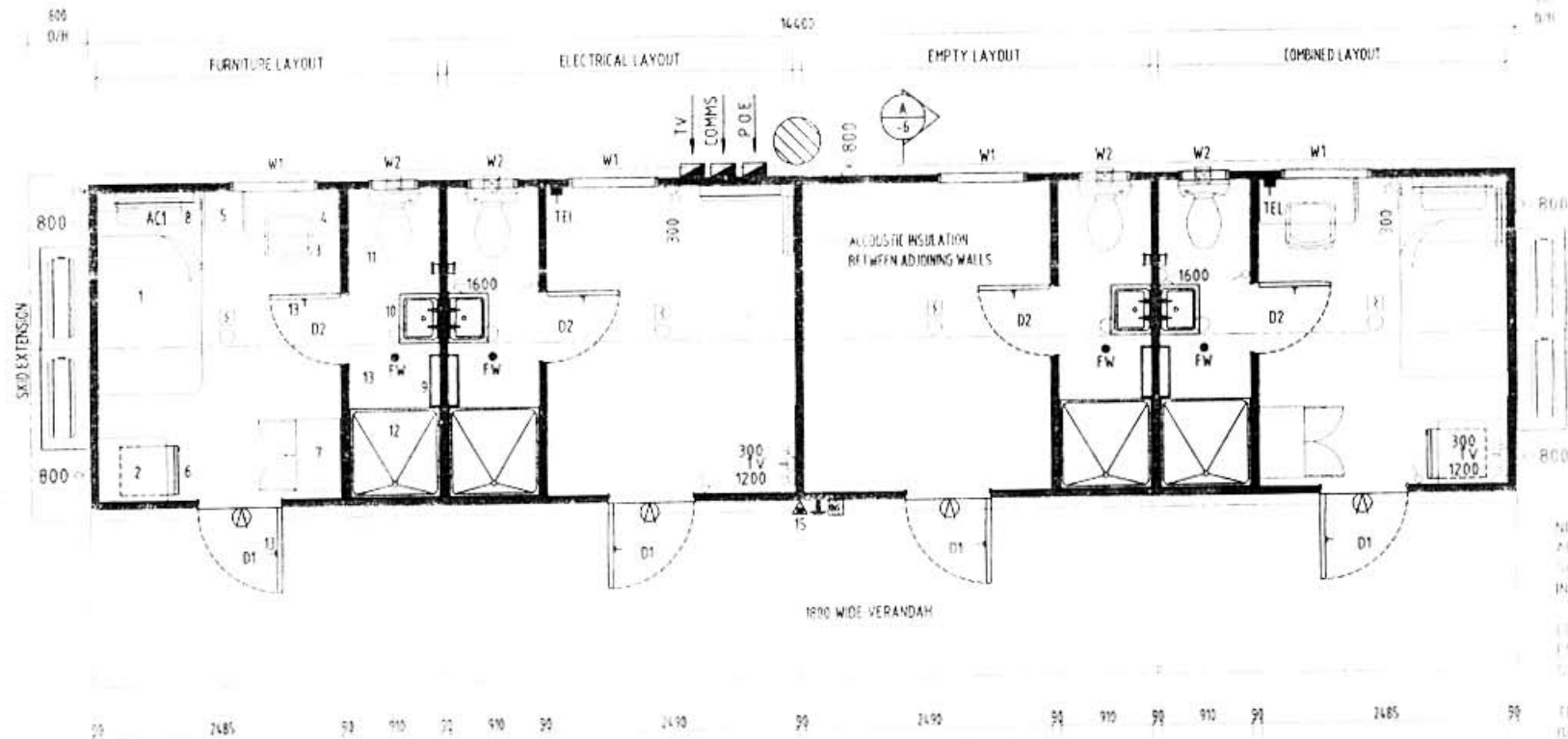
- 5 BED SIDE 3 DRAWER UNIT
- 6 120L BAR FRIDGE
- 7 WARDROBE (1-2 RAILS, 3 DRAWER UNIT, SHELVES & COATHANGERS)
- 8 1000 x 1050 BOOKSHELF OVER C/W BACK & SIDES
- 9 TOWEL RAIL 600 LONG
- 10 S.S. HANDBASIN C/W MIRROR & SHAVING CABINET OVER
- 11 TOILET PAN C/W DUAL FLUSH CISTERN & PAPER HOLDER
- 12 900 x 900 FIBREGLASS SHOWER CURTICLE C/W RAIL & CURTAIN
- 13 SOAP HOLDER & STEP MOULDED INTO CURTICLE WITH LOW VOL. SHWR/HEAD
- 14 COAT HOOK
- 15 90L LITRE ELECTRIC HOT WATER SYSTEM 2 T/W
- 16 9kg POWDER TYPE FIRE EXTINGUISHER & SIGNAGE



ENSUITE PLAN
SCALE 1:50

ELECTRICAL LEGEND

| | |
|--|--|
| | WEATHER PROOF CIRCUIT BREAKER BOARD (POINT OF ENTRY) |
| | SWITCH - LIGHT - SINGLE |
| | SWITCH - LIGHT - TWO-WAY |
| | SWITCH - PHOTO-ELECTRIC (PIE CELL) |
| | LIGHT - 2x36W FLUORESCENT - DIFFUSED |
| | BED LIGHT - SLIMLINE MINI-FLURO WITH INTEGRAL SWITCH |
| | LIGHT - INCANDESCENT FITTING |
| | LIGHT - EXTERNAL BULKHEAD - WEATHER PROOF |
| | GPO - 10 AMP SINGLE - HEIGHT SHOWN |
| | GPO - 10 AMP DOUBLE - HEIGHT SHOWN |
| | PADLOCKABLE ISOLATOR - WEATHER PROOF - HEIGHT SHOWN |
| | FAN - EXHAUST - WALL MOUNTED |
| | TV - TELEVISION POINT |
| | TELEPHONE POINT |
| | HARD WIRED SMOKE DETECTOR (PUSH-TO-TEST) (RATED FOR IONISATION TV) |
| | BREAK GLASS UNIT |
| | ALARM BELL |



PLAN
SCALE 1:50

NOTE
ALL DIMENSIONS ARE FRAME
SIZE. ONLY ADDITION TAKE
INTO ACCOUNT WALL LINING

CONCRETE FLOOR (BOND)
EXTERNAL WALLING TO BE
SANDBANK

TELEPHONE & TV POINTS TO
BE INDIVIDUALLY WIRED TO
EACH ROOM FROM CENTRAL
POINT